



nanoFlash Mount

Setup, Use, and Care Guide Addendum

Copyright 2010, Gates Underwater Products, Inc.

Last document revision: February 20th, 2010

This manual is available in 8.5 x 11 size and full color at

<http://www.gateshousings.com/documentation.html>

Gates Underwater Products, Inc.

13685 Stowe Drive
Poway, California 92064 USA

Phone: 800.875.1052 toll-free in the U.S.
858.391.0052 outside the U.S.
Fax: 858.391.0053

Web: <http://gateshousings.com/>

Table of Contents

1:	Introducing nanoFlash Mount.....	3
	Features.....	3
	Warranty Disclaimer.....	3
2:	Installing nanoFlash Mount	5
	Bracket.....	5
	Power Options	6
	SDI Cable.....	8
	nanoFlash / Camera setup	8
	Final Checks	9
	Installing EX1 / EX1R camera into housing.....	10
3:	Customer Support	12

1: Introducing nanoFlash Mount

Congratulations on owning a new GATES product: nanoFlash Mount. You've selected a product that will provide years of value and reliable service. We designed this product specifically to enhance the capability of your Gates underwater imaging system and add value to your investment.

Please read through this entire guide to learn about nanoFlash Mount so you can get the most out of this valuable tool. In this section, we'll introduce you to the features of nanoFlash Mount so you can get started.

The sections that follow explain how to setup, unpack and prepare nanoFlash Mount for use.

Features

nanoFlash Mount has several key features:

Tight integration to the Gates EX1 / EX1R housings. The Gates nanoFlash Mount allows the Convergent Design's nanoFlash recorder to be utilized underwater in the EX1 / EX1R housings.

Broadcast level image quality. The combination of nanoFlash recorder, EX1 / EX1R cameras and Gates housing meets the highest level of broadcast quality standards for HD acquisition.

Convenient and easy to use. nanoFlash Mount is straightforward & easy to install.

Warranty Disclaimer

nanoFlash Mount is a tool that, like any tool, requires knowledge and understanding to be effective. When used properly, nanoFlash Mount secures the Convergent Design's nanoFlash product to the EX1 / EX1R cameras for use in Gates housings.

Your responsibility is to learn the proper setup, use and care of nanoFlash Mount. Because we can only provide you with the information necessary to do so, Gates does not warrant the contents of your housing (e.g. your camera and lenses) under any circumstance. We warrant nanoFlash Mount as a mounting only for a period of 2 years.

If you have any questions about the setup, use and care of nanoFlash Mount, contact Gates directly. Details are in section 6.

Unpacking nanoFlash Mount

After you remove nanoFlash Mount from its shipping container, carefully inspect it for missing parts or damage that may have occurred during shipment. If you discover any discrepancies, contact Gates or your dealer immediately for assistance.

Standard Parts

nanoFlash Mount comes with the following standard parts:

SDI Cable

nanoFlash Mount Bracket

M2.5x14 Screws x 4

Thumbscrew x 2

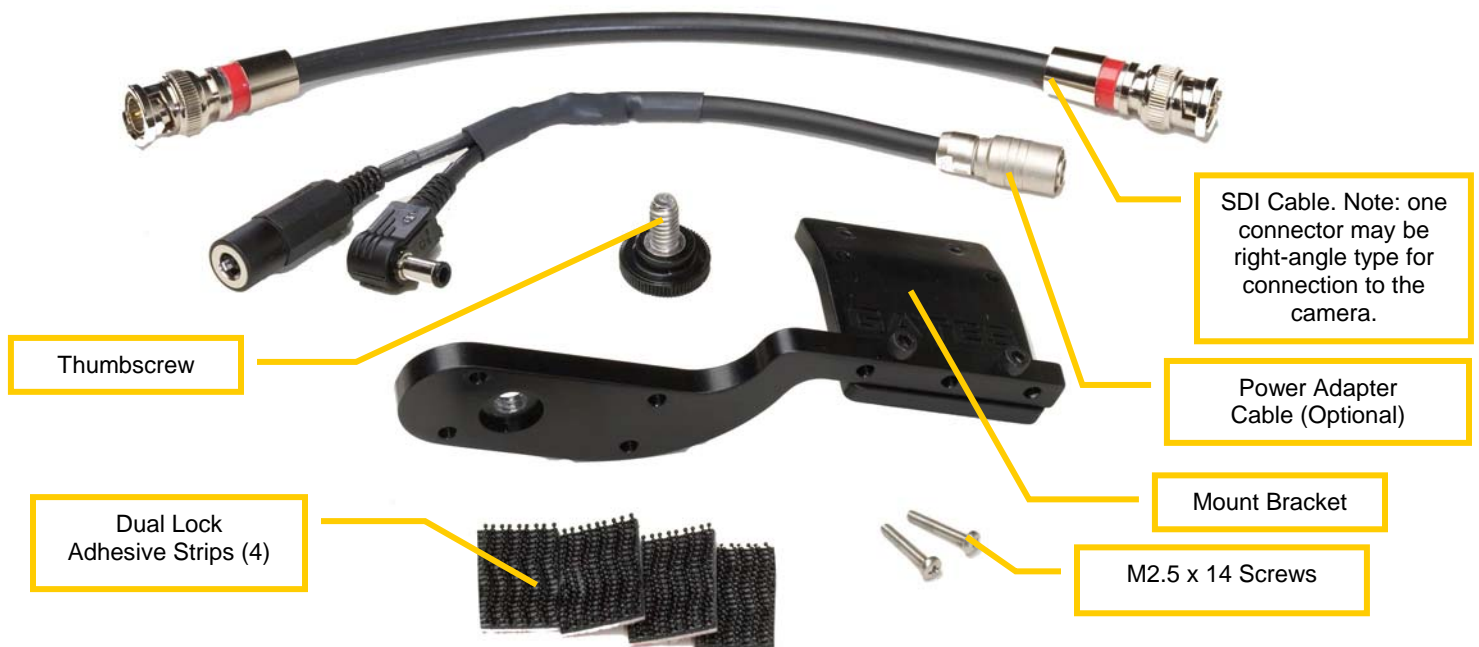
Dual Lock Adhesive Strips x 4

NOT INCLUDED with this kit is the nanoFlash recorder or SWIT battery (referenced below). These items are purchased separately from the manufacturer.

Optional Parts

Your nanoFlash Mount may also come with an optional cable:

Power Adapter Cable (for use with SWIT battery S-8U62. See Power Options section)



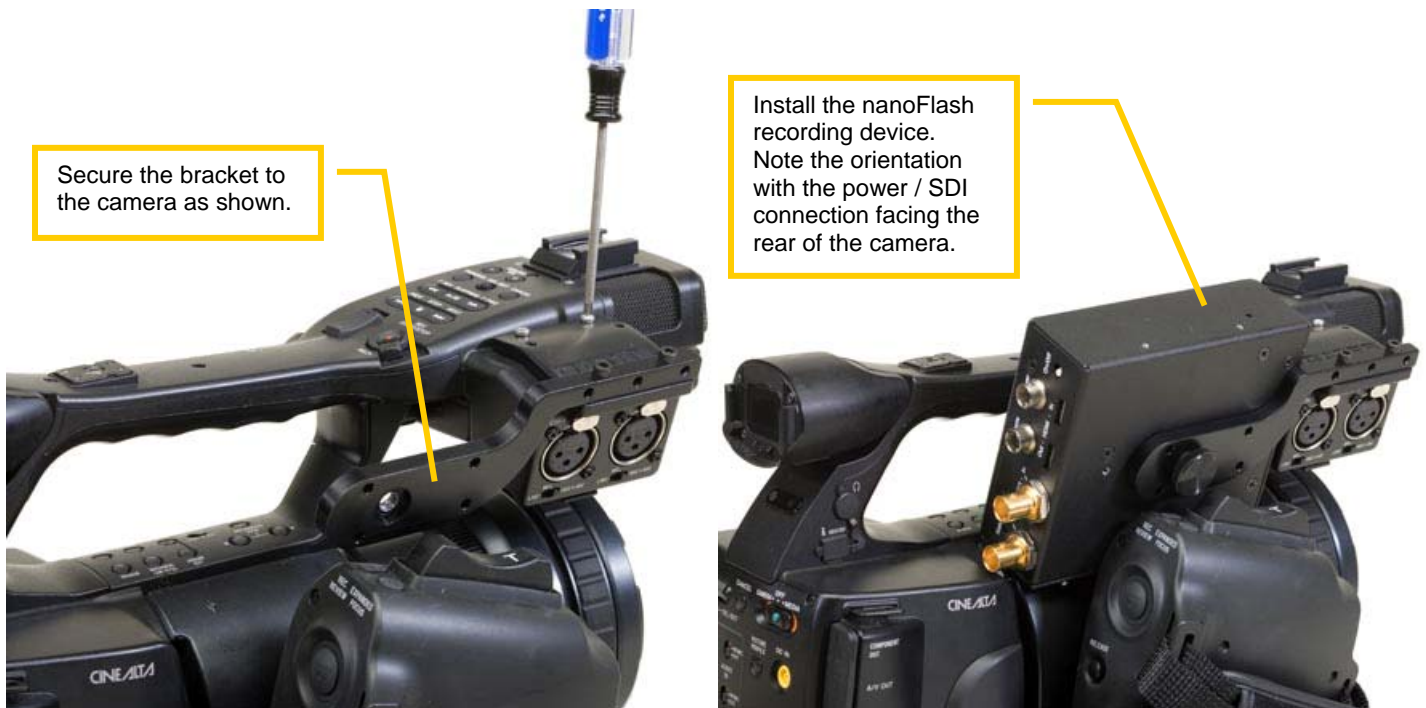
2: Installing nanoFlash Mount

nanoFlash Mount is straightforward to install and use, but we recommend you take time to become familiar with the system. This will help ensure that operation will go smoothly at your dive location.

Bracket

Secure the bracket to the EX1 / EX1R cameras. Two M2.5x14 screws will fasten the bracket to the boom mic mount holes. Refer to the photo for proper orientation of the bracket.

Install the nanoFlash recording device to the bracket with the thumbscrew. Refer to the photo for orientation of the nanoFlash on the bracket. The thumbscrew allows quick removal of the nanoFlash recorder between dives. NOTE that it is not necessary to remove the bracket if the nanoFlash recorder is not used. The bracket will not interfere with any EX1/EX1R housing controls or functions.



Power Options

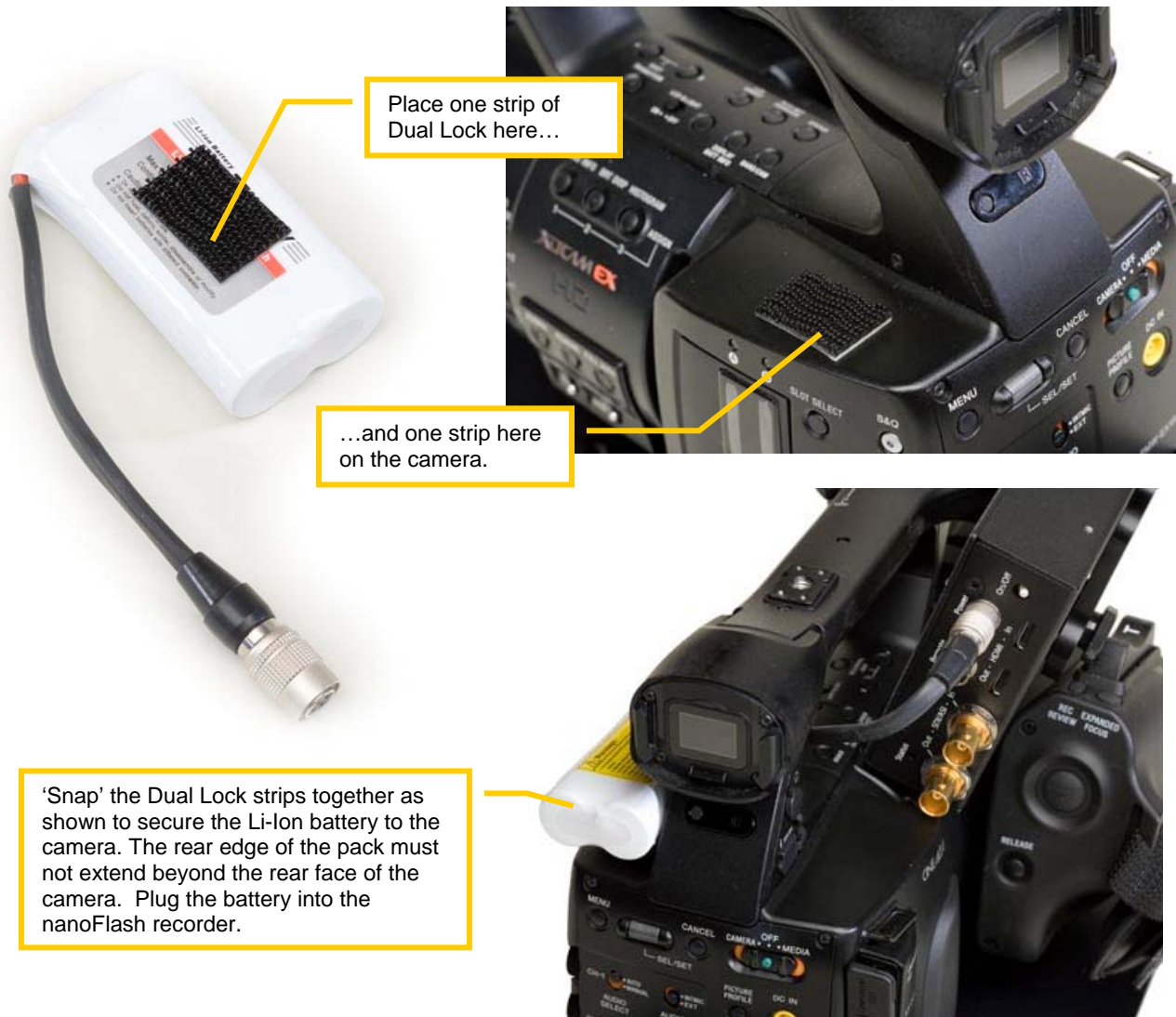
You have two options for powering the nanoFlash recording unit.

OPTION 1: nanoFlash Li-Ion battery. Included with the nanoFlash recording unit from Convergent Design are two Li-Ion battery packs. These batteries can be secured to the left side of the camera with the Dual Lock adhesive strips provided with the nanoFlash.

Attach the Dual Lock to both the battery pack and camera in the locations shown.

Secure the battery onto the camera. Note how the two pieces of Dual Lock ‘snap’ together.

► **TIP:** The rear of the Li-Ion battery cannot extend beyond the rear of the camera face (refer to photo). Interference with the rear housing shell may occur.



OPTION 2: SWIT Battery S-8U62. This battery is NOT INCLUDED with the nanoFlash Mount, but rather available from the manufacturer. (<http://www.swit.us/libas.html>)

The S-8U62 can provide power for both the camera and nanoFlash recorder simultaneously. The optional Power Adapter Cable is available from Gates to do so.

► **NOTE:** This option is only applicable to the EX1R housing, which can accommodate the larger SWIT battery.

Install a charged SWIT battery onto the camera. Note that the battery does not power the camera via the normal pin contacts on the interface between battery and camera, but rather through the DC plug.

Plug the Power Adapter Cable into the SWIT battery and camera. Refer to the photo.

Plug the Power Adapter Cable into the nanoFlash recorder. Verify Power to the recorder.



SDI Cable

Connect the SDI cable to the camera, then to the nanoFlash recorder 'Input' connector.

nanoFlash / Camera setup

nanoFlash recorder settings are as follows. This is an example only: refer to the nanoFlash recorder user manual for settings that may be required for your application.

SYSTEM→TRIGGER→TIMECODE

SYSTEM→TIMECODE→SOURCE→EMBEDDED

SYSTEM→SOURCE→SDI

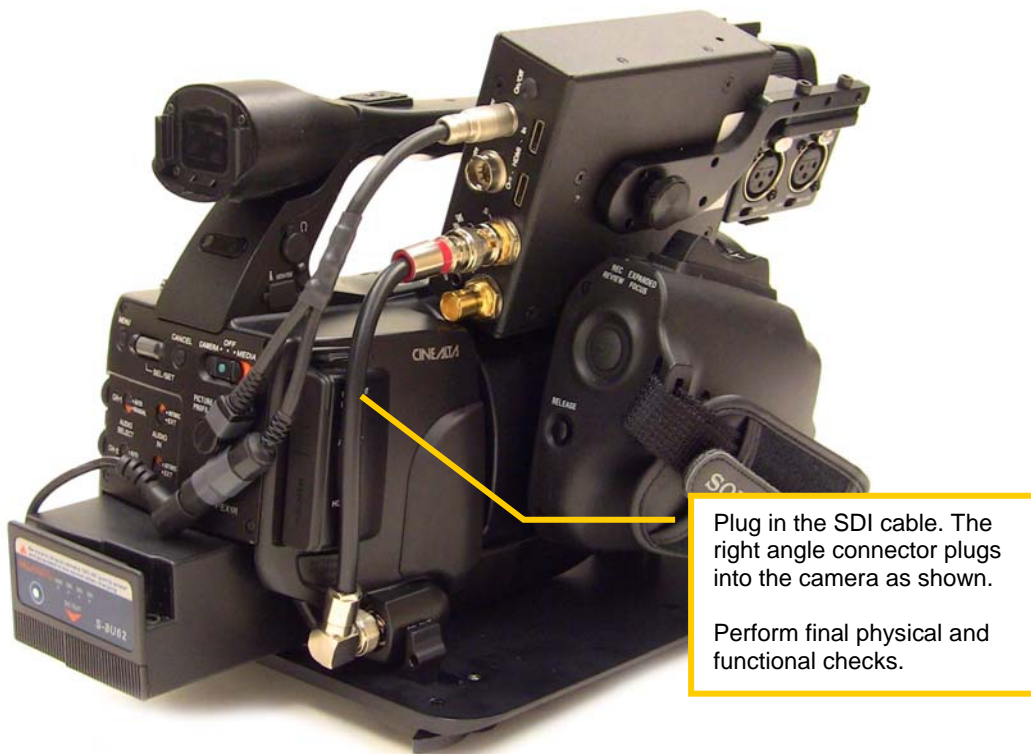
EX1 / EX1R camera settings.

SDI Output. To output video via SDI, set the EX1 / EX1R camera as follows.

MENU→VIDEO SETTINGS→HD SDI / COMPONENT

Video Out Display. Video out display information must be turned off so it is not recorded by the nanoFlash device. This also means that when using an external monitor the display information will not be present. The rear viewfinder will still display this information. To turn the video out display information off:

MENU→VIDEO SETTINGS→YPbPr / DIGITAL OUT DISPLAY→OFF



Final Checks

Perform these checks prior to inserting the camera/nanoFlash recorder assembly into the EX1 / EX1R housing.

Charged battery(s). Verify the nanoFlash Li-Ion (if used) and camera batteries are fully charged.

Compact Flash cards are in the nanoFlash with sufficient recording capacity. Ensure SxS cards are also installed in the camera.

nanoFlash recorder is secure to the camera/bracket.

SDI and battery cables are firmly connected.

Verify nanoFlash operation. Confirm all functions and settings are correct.

Verify camera operation. Turn on the camera and verify all functions and settings are correct.

Verify camera/nanoFlash interation. Starting record/standby on the camera will trigger record/standby on the nanoFlash unit as well. Confirm this by a synchronized time code on both the camera and nanoFlash recorder displays.

Installing EX1 / EX1R camera into housing

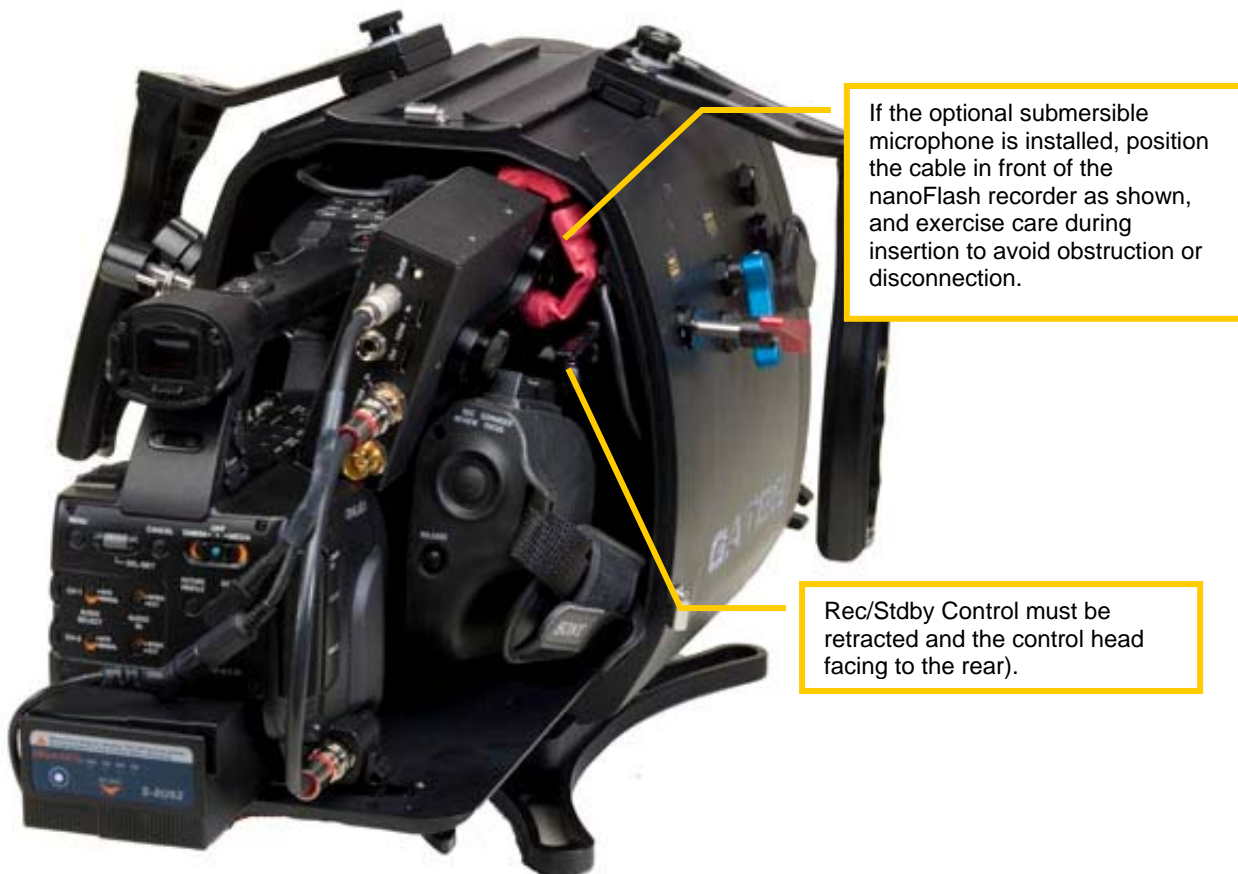
The EX1 / EX1R housing SU&C Guide outlines the procedure for inserting the camera into the housing. The process remains largely unchanged with the nanoFlash recorder attached, however specific considerations for the nanoFlash recorder are noted here.

Position the camera for insertion into the housing as shown in the photo. Make special observation of the following:

Microphone Cable/Connection. If you have the optional submersible microphone installed, carefully route the cable as shown: in front of the nanoFlash recorder. When inserting the camera, exercise care that the cable does snag or create an obstruction.

If the submersible microphone is not needed, Gates recommends you remove the XLR adapter and secure the 3.5mm plug to the roof of the housing shell, clear of the camera/nanoFlash recorder during insertion.

nanoFlash recorder clearance. The nanoFlash recorder will be very close to the inside roof of the housing shell. Exercise care during insertion.

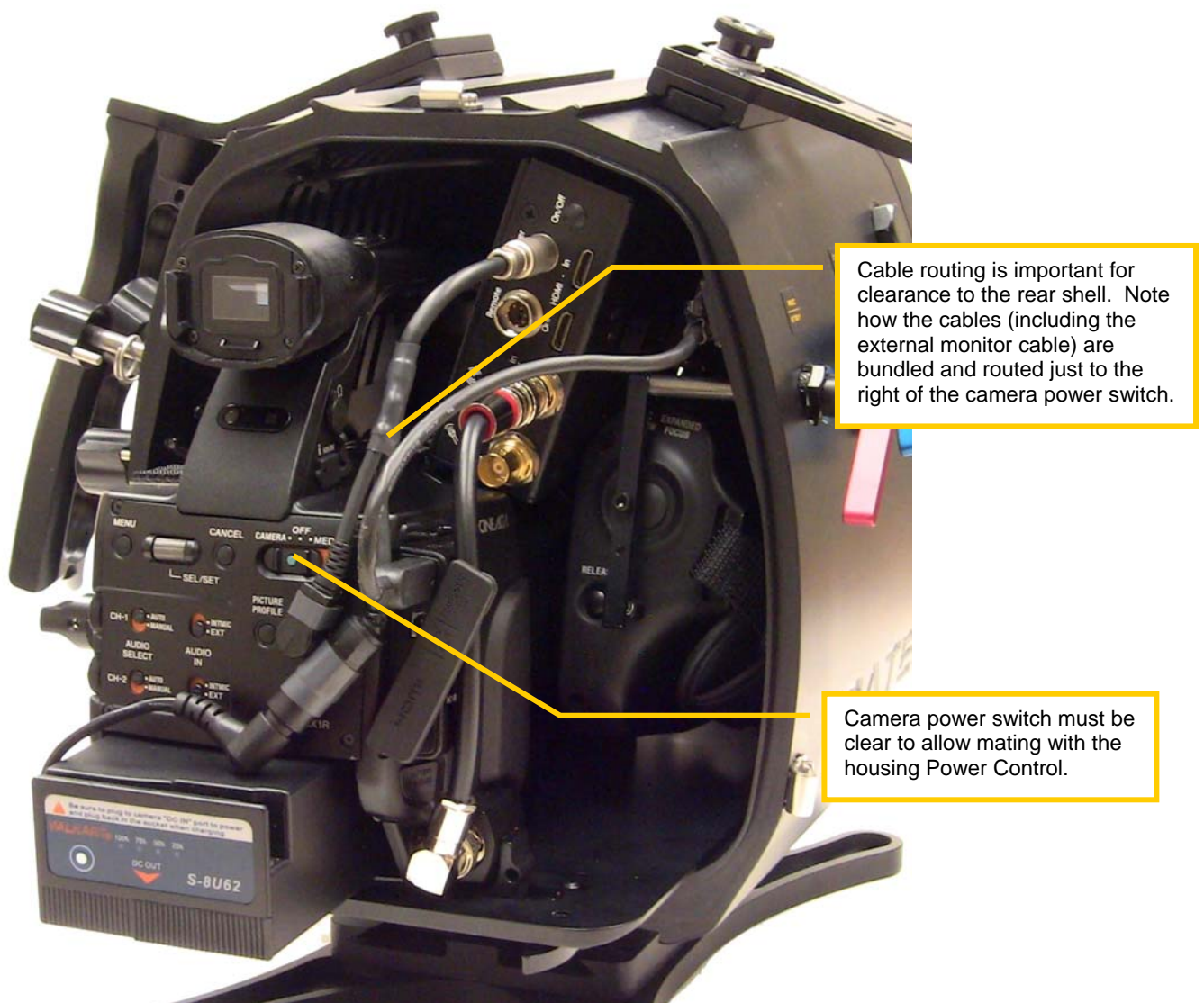


Insert the camera into the housing until fully seated. Make special note of the following:

Cable routing. Refer to the photo for proper routing of the cables. They should fall just to the right of the camera power switch.

Power Control. The space immediately behind the camera power switch must remain clear for mating with the housing Power Control.

Obstructions When mating the rear shell be observant of cable obstructions. If the shell does not mate easily and readily, remove it and examine the cable routing. Use a flashlight and peer in the rear window when mating the shell.



3: Customer Support

Should you have any questions about nanoFlash Mount and its operation, please contact Gates at the numbers below.

Email: Customer.srvc@GatesHousings.com

Web: www.GatesHousings.com

Phone: 858.391.0052

Fax: 858.391.0053